



HOUSE & LAND

Maplewood Estate

\$556,480

House Name: Point

Facade: Woodlands

Lot Address: Lot 928 Laurier Avenue, Melton South

Land Size: 363 m² House Size: 16.17sq



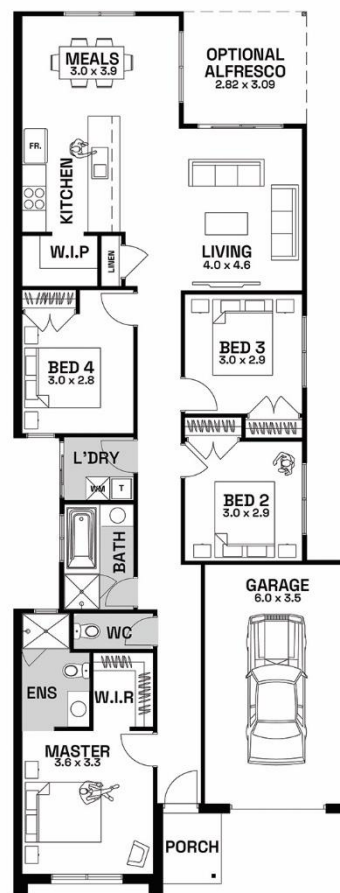
4 2 2

Standard Inclusions

- 4 spacious bedrooms
- Double car garage
- Stunning façade included
- Professionally designed colour schemes on offer!
- Colorbond garage door with 2 remotes
- Keyed locks to all windows
- And much more

Turn-Key Inclusions

- Carpets and tiles throughout
- Stainless steel appliances including dishwasher
- Blinds to all openable windows and sliding doors
- Flyscreens to all openable windows
- Coloured concrete driveway
- Natural concrete path on sides of home
- Letterbox
- Clothesline
- Council requirements incl. OH&S
- Fixed site costs including rock removal
- Full landscaping front and rear



Total package price takes into account Land Price - \$325,000
Build Price - \$231,480

The facade image provided is for illustrative purposes only.
The picture illustrated may show the driveway/garage to the opposite side of the actual floorplan.

For more information, please contact ROBERT – 0492 288 571