



# Steel Frames



Melton South

22 sq 4 2 2 451m<sup>2</sup>

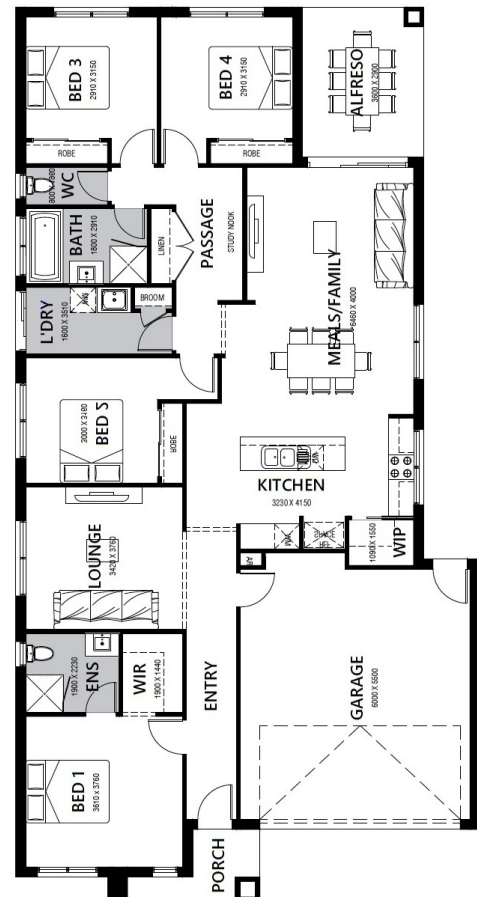
### House & Land Package

Lot 922 McCulloch Street (Maplewood), Melton South

**\$666,500 INC FHB- 22SQ FULL STEEL FRAME HOME**

#### AMAZING DISPLAY HOME INCLUSIONS

- Carpet & tile flooring throughout
- 2550mm ceiling heights and LED Downlights throughout
- Caesar Stone benchtops to kitchen and bathrooms
- Framed mirror or vinyl sliding doors to robes.
- Stainless Steel Westinghouse Underbench Oven & Gas Cooktop.
- Stainless Steel Dishwasher
- Kitchen with 20mm Caesar Stone benchtops
- Brick infills overall external openings.
- Driveway and remote control garage
- Blinds to all windows and sliding doors
- 2000mm nominated high semi-framed shower screens with pivot door and clear glass, and tiled shower bases
- Window locks to all openable windows.
- Clothesline and letterbox
- Flyscreens with aluminum mesh to all openable windows
- Chrome finish double towel rails and toilet roll holders.
- Ducted heating to bedrooms and living areas
- NBN connection
- Multiple facade options



## Contact - Shweta Kharbanda

Mobile: 0474 321 859 | Email: shweta@hlvictoria.com.au